

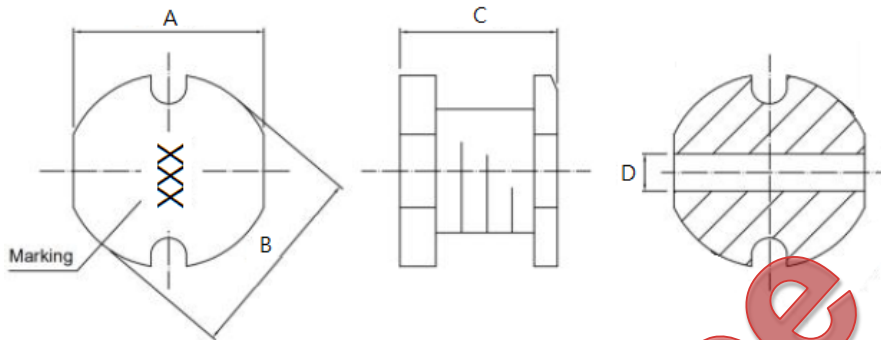
SDR5832-Series-H2 Specification

SMD Unshielded Power Inductor

APPLICATION

Tablet terminals, HDDs, SSDs, DVCs, DSCs, mobile display panels, portable game devices, Telecommunications, Consumer electronics, Compact power supply modules, other

1. Shapes and Dimensions



Unit: mm

Type	A	B	C	D
SDR5832	5.20±0.30	5.80±0.30	3.00±0.30	2.00 Ref.

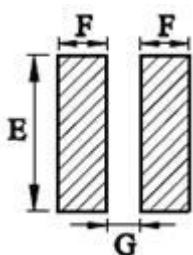
2. Ordering / Part Number Information

SDR 5832 - 1R0 M - H2
 (1) (2) (3) (4) (5)

- (1) Product Group
- (2) Dimension Code
- (3) Inductance Code
- (4) Inductance Tolerance
- (5) Control Code

3. Recommended Soldering Condition

3-1. Recommended Land Pattern

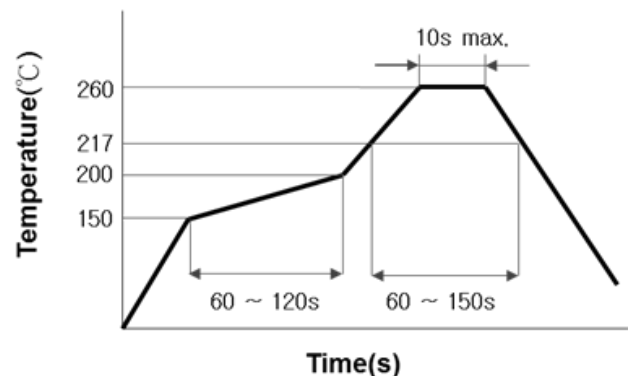


Unit : mm

Symbol	Dimension
E	5.50 Ref.
F	2.20 Ref.
G	1.60 Ref.

The Recommended Land pattern is for reference only.
 Please consult your manufacturing partners to ensure your company's PCB design guidelines are met

3-2. Recommended Soldering Profile



4. Electrical Characteristics

4-1. Electrical Specification

Part Number	Inductance (L)	Test Freq.	DC Resistance (R _{DC}) Max.	Saturation Current (I _{SAT}) Typ.
SDR5832-1R0M-H2	1.0uH ±20%	7.96MHz	0.03Ω	6.90A
SDR5832-1R5M-H2	1.5uH ±20%	7.96MHz	0.03Ω	5.10A
SDR5832-1R8M-H2	1.8uH ±20%	7.96MHz	0.03Ω	5.00A
SDR5832-2R2M-H2	2.2uH ±20%	7.96MHz	0.03Ω	4.70A
SDR5832-2R7M-H2	2.7uH ±20%	7.96MHz	0.04Ω	4.00A
SDR5832-3R3M-H2	3.3uH ±20%	7.96MHz	0.05Ω	3.60A
SDR5832-3R9M-H2	3.9uH ±20%	7.96MHz	0.06Ω	3.20A
SDR5832-4R7M-H2	4.7uH ±20%	7.96MHz	0.07Ω	3.00A
SDR5832-5R6M-H2	5.6uH ±20%	7.96MHz	0.08Ω	2.60A
SDR5832-6R8M-H2	6.8uH ±20%	7.96MHz	0.09Ω	2.40A
SDR5832-8R2M-H2	8.2uH ±20%	7.96MHz	0.10Ω	2.20A
SDR5832-100K-H2	10.0uH ±10%	2.52MHz	0.12Ω	2.00A
SDR5832-120K-H2	12.0uH ±10%	2.52MHz	0.13Ω	1.85A
SDR5832-150K-H2	15.0uH ±10%	2.52MHz	0.15Ω	1.80A
SDR5832-180K-H2	18.0uH ±10%	2.52MHz	0.22Ω	1.68A
SDR5832-220K-H2	22.0uH ±10%	2.52MHz	0.22Ω	1.53A
SDR5832-270K-H2	27.0uH ±10%	2.52MHz	0.26Ω	1.45A
SDR5832-330K-H2	33.0uH ±10%	2.52MHz	0.33Ω	1.22A
SDR5832-390K-H2	39.0uH ±10%	2.52MHz	0.42Ω	1.06A
SDR5832-470K-H2	47.0uH ±10%	2.52MHz	0.50Ω	0.98A
SDR5832-560K-H2	56.0uH ±10%	2.52MHz	0.55Ω	0.83A
SDR5832-680K-H2	68.0uH ±10%	2.52MHz	0.65Ω	0.78A
SDR5832-820K-H2	82.0uH ±10%	2.52MHz	0.80Ω	0.66A
SDR5832-101K-H2	100uH ±10%	1KHz	0.90Ω	0.64A
SDR5832-121K-H2	120uH ±10%	1KHz	1.00Ω	0.58A
SDR5832-151K-H2	150uH ±10%	1KHz	1.30Ω	0.49A
SDR5832-181K-H2	180uH ±10%	1KHz	1.50Ω	0.45A
SDR5832-221K-H2	220uH ±10%	1KHz	2.00Ω	0.41A
SDR5832-271K-H2	270uH ±10%	1KHz	2.50Ω	0.36A
SDR5832-331K-H2	330uH ±10%	1KHz	3.20Ω	0.32A
SDR5832-391K-H2	390uH ±10%	1KHz	3.50Ω	0.27A
SDR5832-471K-H2	470uH ±10%	1KHz	4.20Ω	0.25A
SDR5832-561K-H2	560uH ±10%	1KHz	4.50Ω	0.20A
SDR5832-681K-H2	680uH ±10%	1KHz	6.50Ω	0.18A

The specifications are subject to change or our products in it may be discontinued without advance notice.
Please check with our sales representatives or product engineers before ordering.

Part Number	Inductance (L)	Test Freq.	DC Resistance (R _{DC}) Max.	Saturation Current (I _{SAT}) Max.
SDR5832-821K-H2	820uH ±10%	1KHz	7.50Ω	0.16A
SDR5832-102K-H2	1000uH ±10%	1KHz	8.00Ω	0.15A

Note1. The saturation current for Inductance becomes 10% lower than its initial value.
(Test by a short period of time to minimize the self-heating effect of the component.)

4-2. Operating Temperature Range

-40°C to +125°C (Including self - temperature rise)

4-3. Storage Temperature Range

Store this product under the condition of 5°C to 35°C, 20% to 70%RH and use within 6 months

5. Package Quantity

Standard Quantity for Packaging: 2,000pcs/Reel

Note

1. Please make sure that your product is has been evaluated and confirmed against your specifications when our product is mounted to your product.
2. Do not knock nor drop.
3. All the items and parameters in this product specification have been prescribed on the premise that our product is used for the purpose, under the condition and in the environment agreed upon between you and us. You are requested not to use our product deviating from such agreement.
4. Please keep the distance between transformer/coil and other components (refer to the standard IEC 950)

Reference